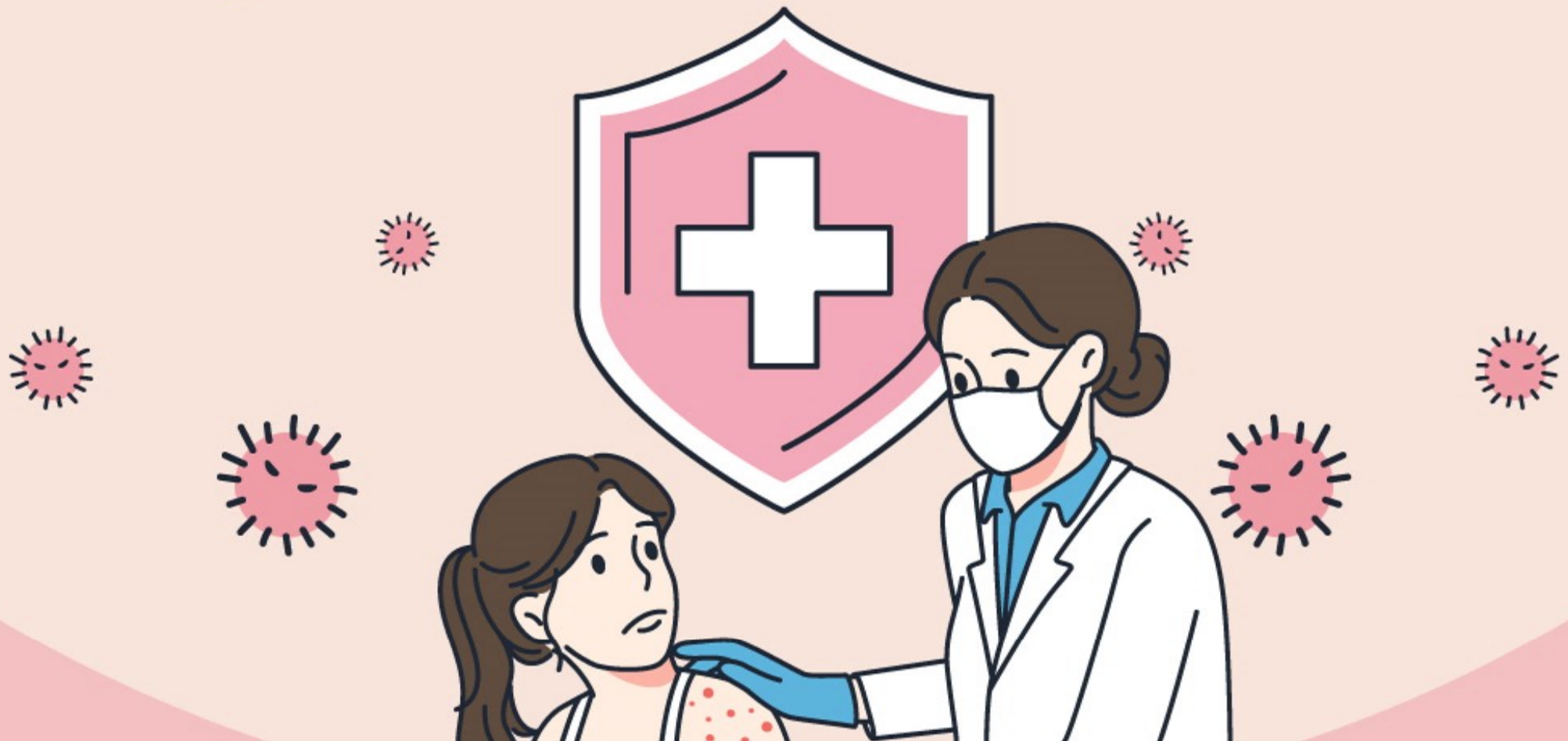


Measles prevention rules

Know it right away and prevent in advance!



It is an infectious disease that spreads through droplets and air, such as coughing or sneezing, and is characterized by being highly contagious.

※ When a person with insufficient immunity to measles comes into contact with a patient, more than 90% of them become infected.

+ Measles main symptoms +

(incubation period 7-21 days)

Prodromal period

Rash period

Recovery period



This is a highly contagious period,



Erythematous rash occurs

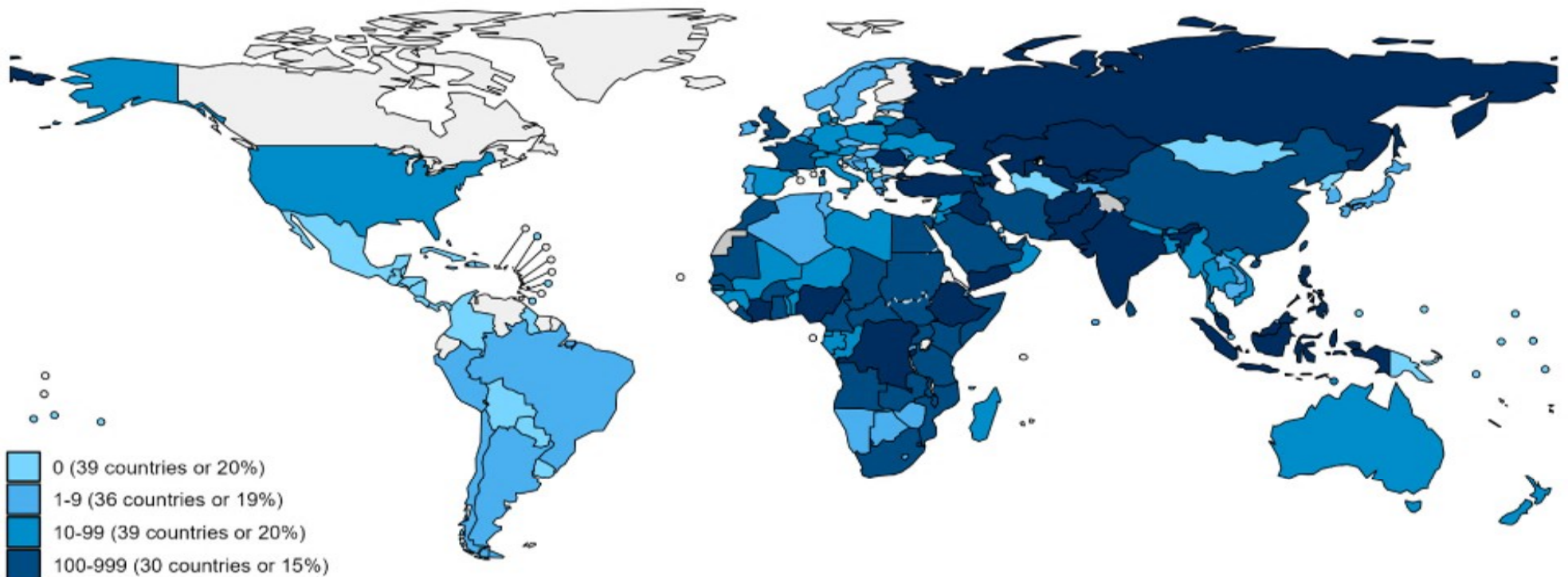


The rash disappears,

The number of measles cases is increasing* worldwide,
Due to the increase in overseas travel,
the possibility of citizens becoming infected with
measles is increasing.

+ Distribution of measles cases in regions +

Sporadic outbreaks and epidemics are continuing, mainly in Europe,
the Middle East, and Southeast Asia.





Before the trip

- ✓ Check whether if you have received 2 doses of the measles vaccine (MMR)
- ✓ If you have not received both doses or are uncertain whether if you have been vaccinated, visit a medical institution 4 to 6 weeks before departure and receive two doses at 4-week intervals.



Traveling

- ✓ In crowded places, follow personal hygiene rules such as wearing a mask, washing hands, and coughing etiquette.



Upon Entry

- ✓ Notify the Quarantine Officer if you have a fever or rash upon entry.

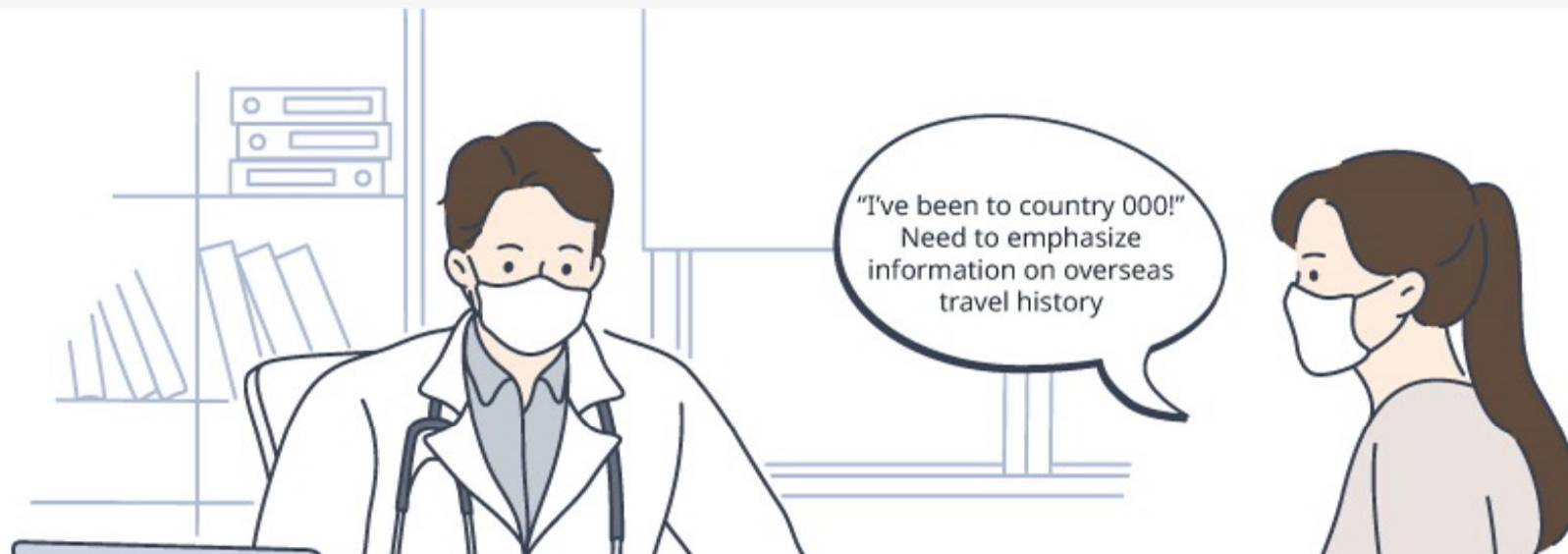


Visit Medical Institutions by wearing a mask and minimizing contact with others.

(Refrain from using public transportation)



Inform the Medical Staff of your 'overseas travel history'



+ Measles Vaccination standards by Age +

Age	Vaccination Method
0~5 mos. old	Not eligible to vaccination
6~11 mos. old (Accelerated vaccination*) * Applicable when the standard vaccination schedule cannot be followed unavoidably and when immunity must be obtained quickly	One-time vaccination when traveling Overseas * MMR vaccination before 12 months of age is not included in the number of vaccinations, so 2 vaccinations are required according to the standard vaccination schedule in the future.
12~15 mos. old (Timely Vaccination)	1st vaccination
4~6 years old (Timely Vaccination)	2nd vaccination
Youth and Adults*	※ When there is no evidence of immunity 2 doses (at least once) administered, at least 4weeks apart

* If you were born before January 1, 1968,
you do not need to be vaccinated as you are considered to have natural immunity to measles.

※ If there is no evidence of measles immunity

**Check the Measles
prevention rules
before traveling abroad and
have a pleasant trip!**

